

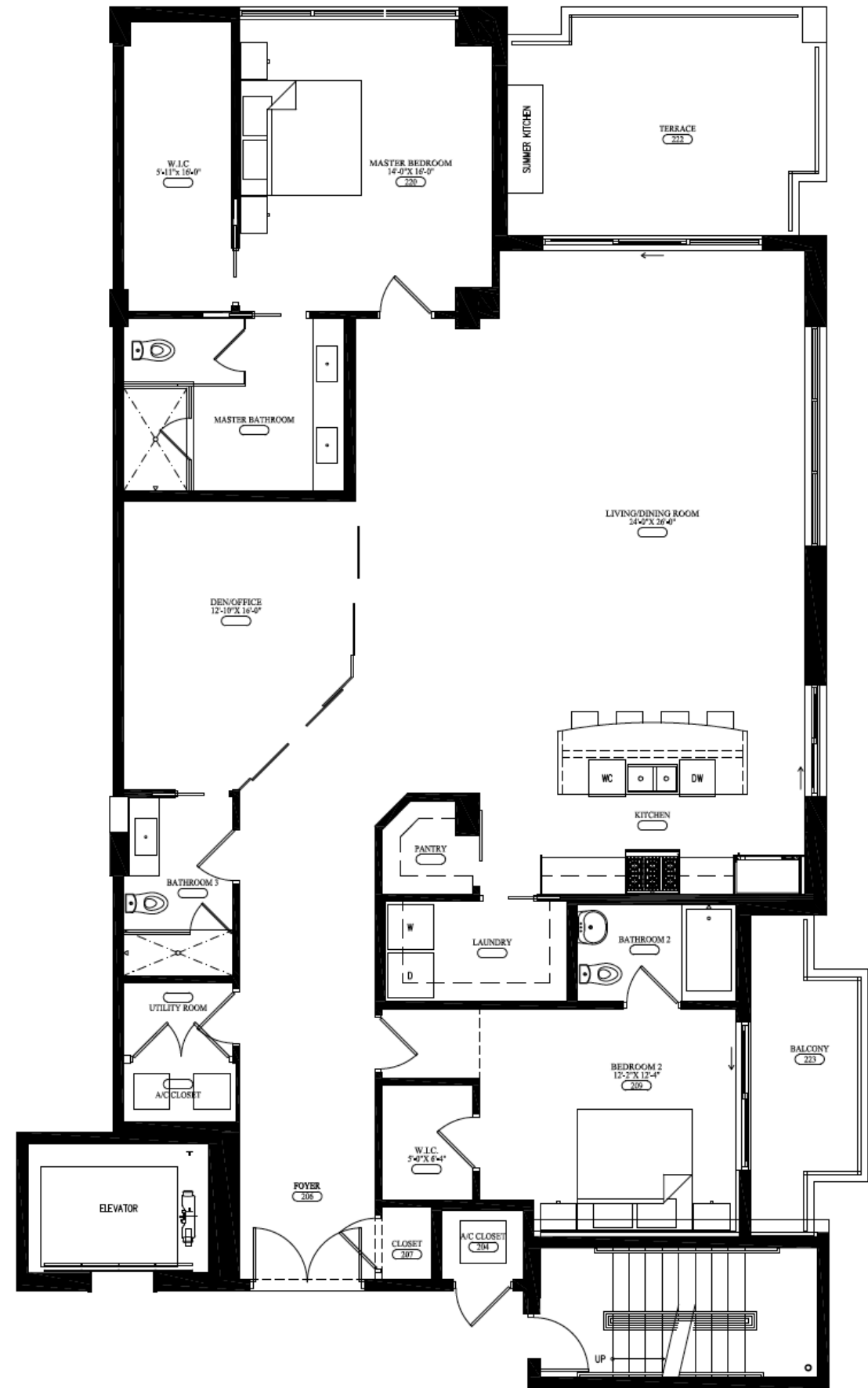
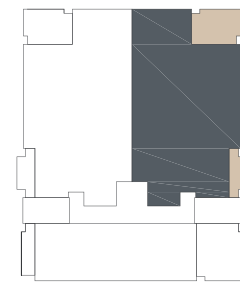
PORT RESIDENCES

FLOOR PLAN A

RESIDENCE FEATURES

- 2 bedrooms
- 3 full bathrooms
- Optional den / office
- Spacious open floor plan
- Large walk-in closets
- Large terraces with summer kitchen
- Full-size laundry room

UNIT	A/C	TERRACE	TOTAL
202 NW	2,372 SF	312 SF	2,684 SF
203 NE	2,372 SF	312 SF	2,684 SF
302 NW	2,372 SF	312 SF	2,684 SF
303 NE	2,372 SF	312 SF	2,684 SF
402 NW	2,372 SF	312 SF	2,684 SF
403 NE	2,372 SF	312 SF	2,684 SF
502 NW PH	2,372 SF	312 SF	2,684 SF
503 NE PH	2,372 SF	312 SF	2,684 SF



HARBORS EDGE

1507 SE 15TH STREET, FORT LAUDERDALE, FL 33316
 954.758.9425 • HARBORSEGEVILLAS.COM

ORAL REPRESENTATIONS CANNOT BE RELIED UPON AS CORRECTLY STATING THE REPRESENTATIONS OF THE DEVELOPER. FOR CORRECT REPRESENTATIONS, MAKE REFERENCE TO THIS BROCHURE AND TO THE DOCUMENTS REQUIRED BY SECTION 718.503, FLORIDA STATUTES, TO BE FURNISHED BY A DEVELOPER TO A BUYER OR LESSEE.

These materials are not intended to be an offer to sell, or solicitation to buy a unit in the condominium. Such an offering shall only be made pursuant to the prospectus (offering circular) for the condominium and no statements should be relied upon unless made in the prospectus or in the applicable purchase agreement. In no event shall any solicitation, offer or sale of a unit in the condominium be made in, or to residents of, any state or country in which such activity would be unlawful. All prices, plans, specifications, features, amenities and other descriptions are preliminary and are subject to change without notice, as provided in your purchase agreement. Stated square footages and dimensions are measured to the exterior boundaries of the exterior walls and the centerline of interior demising walls and in fact vary from the square footage and dimensions that would be determined by using the description and definition of the "Unit" set forth in the Declaration (which generally only includes the interior airspace between the perimeter walls and excludes all interior structural components and other common elements). This method is generally used in sales materials and is provided to allow a prospective buyer to compare the Units with units in other condominium projects that utilize the same method. Accordingly, the area of the actual room will typically be smaller than the product obtained by multiplying the stated length and width. See the Declaration for additional details. All dimensions are estimates which will vary with actual construction, and all floor plans, specifications and other development plans are subject to change and will not necessarily accurately reflect the final plans and specifications for the development. All depictions of furniture, appliances, counters, soffits, floor coverings and other matters of detail, including, without limitation, items of finish and decoration, are conceptual only and are not necessarily included in each Unit. This project is being developed by 1507 Partners, LLC ("Developer"), which has a limited right to use the trademarked names and logos of CD Associates. Any and all statements, disclosures and/or representations shall be deemed made by Developer and not by CD Associates and you agree to look solely to Developer (and not to CD Associates and/or any of its affiliates) with respect to any and all matters relating to the marketing and/or development of the Condominium and with respect to the sales of units in the Condominium.